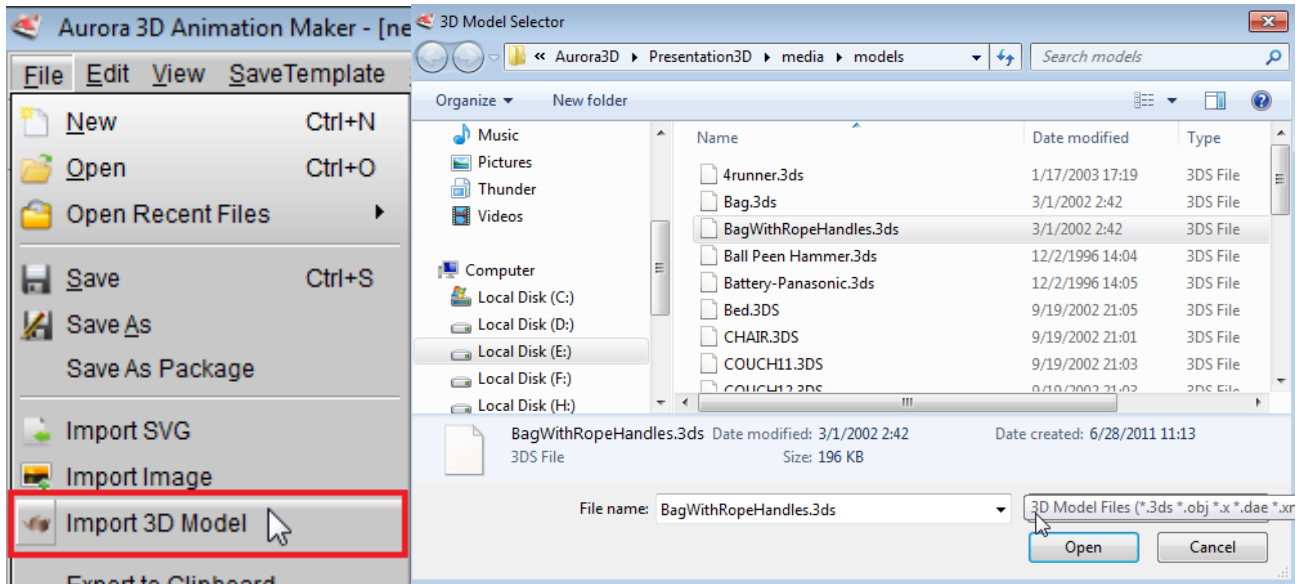
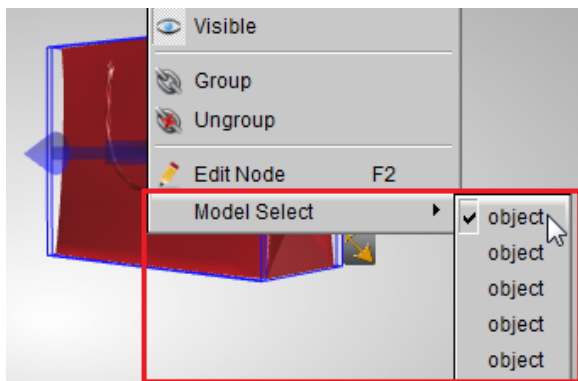


How to import 3D Model and change Properties

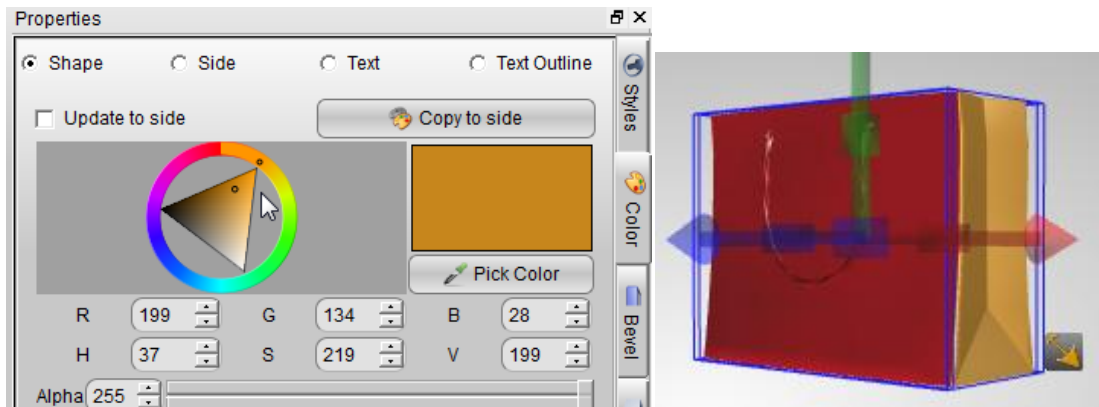
1. In our products, we can import 3D Model, and make some animation for it. First, select the menu: File -> Import 3D Model.
2. In the 3D Model Selector, we can import 3DS, OBJ, DAE, DXF, MS3D, BLEND, etc.,



3. When we import a Model, we can right click on the Model and select any part of the Model.



4. Switch to the Color tab, and change the color or texture for the part of the 3D Model.



5. We can select the part of the model and change them one by one. When we finished, we can rotate, move or make animation on it.



Aurora3D Software: www.aurora3dsoftware.com www.presentation-3d.com

Email: support@presentation-3d.com